



Seeing your baby in the womb anytime anywhere!



Anytime! Anywhere!



STEP
1

Receive
an AngelMemory card.



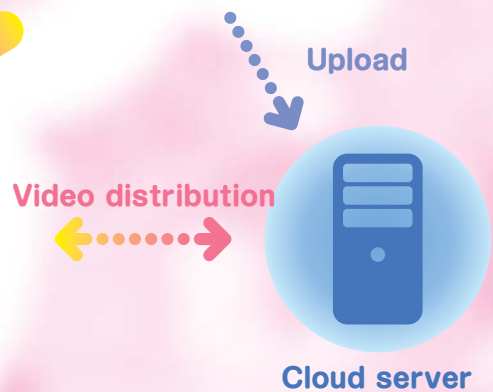
STEP
2

Hand over the AngelMemory card
to record the ultrasonography video.



STEP
3

Access the service site
via smartphones, tablets,
PCs or cellular phones.
It can be viewed anytime and anywhere.



Information on how to use the service

1 Access the AngelMemory login screen.

It can be viewed on smartphones, tablets, PCs and cellular phones.

URL <http://www.angel-memory.jp/>

SEARCH

- ※ It can be accessed using the QR code on the back of the card.
- ※ For some medical institutions, a button to access AngelMemory is available on their Web page.



QR CODE



2 When using the service for the first time, new registration is required.

Click the [New Registration] button to display the New Registration screen.

- Click [Click here for sample video] to confirm that the sample video can be viewed.



※ This system may not be available on some device models and browsers.

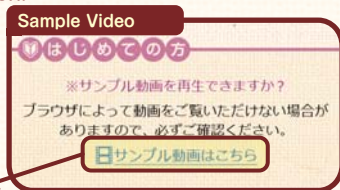
※ If the video cannot be viewed, please try using a different smartphone, tablet, PC or cellular phone.

- If the video can be successfully viewed, Please make sure to read the Terms of Use.

- Fill out all of the required fields, and click the [go to the confirmation screen] button.

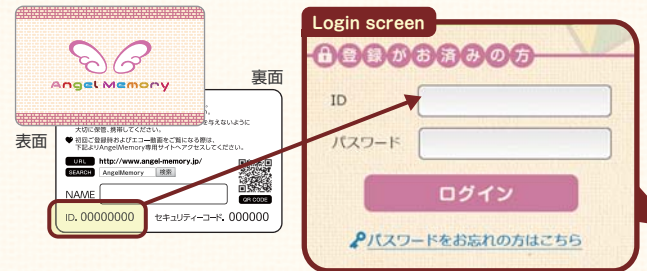
※ Password, nickname and due date can be modified afterwards.

- After new registration is completed, click the [Go to the video playback screen] button.



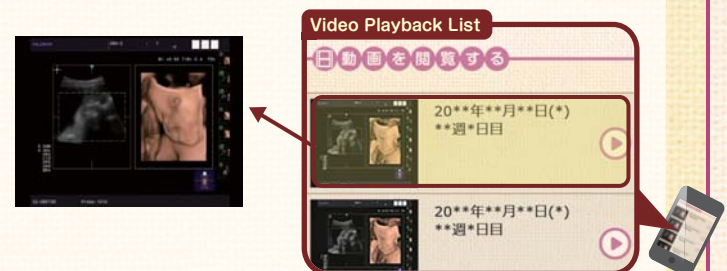
3 Registered users can now login.

Enter the ID and password and click the [Login] button.



4 The videos can be viewed from the video playback list.

Click a thumbnail image to play the video.



※ The [Download the video] button is only displayed when viewing on PCs. Click the button to save the video on the PC. (Video format: mp4 format)

5 Your family and friends can also view the videos.

Provide the URL for AngelMemory, your ID and password to your family and friends to share the videos with them.

With the ID and password, anyone can watch the ultrasonography videos anywhere.



Notes

- ♥ This service is available for **18 months after new registration**. After the end of the final month, service term extension and data will no longer be available.
- ♥ A reissue fee may be incurred when reissuing an AngelMemory card. Please make sure to keep the card safe to prevent loss or damage.
- ♥ When using this service from cellular terminals (smartphones, tablets, cellular phones, etc.), **a packet communication fee may be incurred**. If you are not subscribed to a fixed-charge plan, please note that a substantial amount of communication fees may be incurred.



Sample Video

はじめての方

※サンプル動画を再生できますか？
ブラウザによって動画をご覧いただけない場合がありますので、必ずご確認ください。

[サンプル動画はこちら](#)

New Registration

はじめての方

新規登録

すべての項目を入力してください。



♡ ID

カードの裏面を参照

♡ セキュリティコード

カードの裏面を参照

♡ パスワード

※半角英字・半角数字・半角記号をいずれも含みます
※英字の大文字と小文字は区別されます
※6文字以上20文字以内

♡ パスワードの再入力

♡ ニックネーム

※本名はなるべく避けてください
※動画閲覧時、取込時に院内端末に表示されま
す
※1文字以上20文字以内

♡ 予定日

年 月 日

※予定日が分からない場合は今日の日付を入力してください

確認画面へ

For new users

※Can you play the sample video?

The sample video may not play on some browsers. Please check to see if you can play the video.

[Click here for sample video](#)

Please make sure to read the Terms of Use. If you agree to them, click the [I agree] button.

New Registration

Fill out all of the required fields.



♡ ID

See the back side of the AngelMeory card.

♡ Security code

See the back side of the AngelMeory card.

♡ Password

※Alphanumeric characters and symbols (single-byte) can be included.
※Alphabets are case-sensitive.
※Use 6 - 20 characters.

♡ Re-enter password

♡ Nickname

※Avoid using your real name if possible.
※This nickname is displayed on the terminal at the hospital when viewing and importing videos.
※Use 1 - 20 characters.

♡ Due date

Year / Month / Day

Go to the confirmation screen

